

Reintroducing and restoring shellfish reefs in the North Sea: The beginning

Wouter Lengkeek
Bureau Waardenburg

POC:

Hein Sas, Aad Smaal, Pauline Kamermans, Tom van
der Have



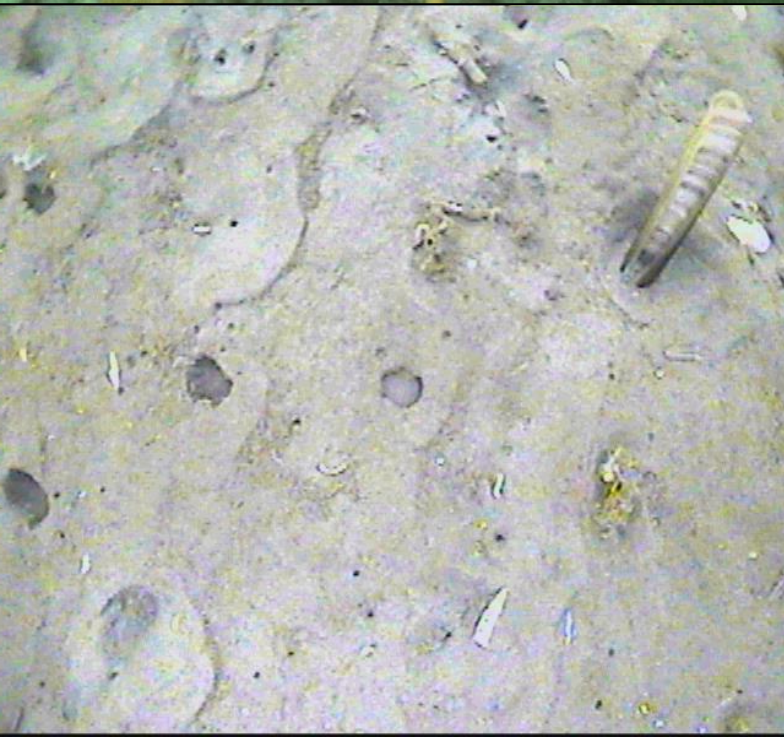
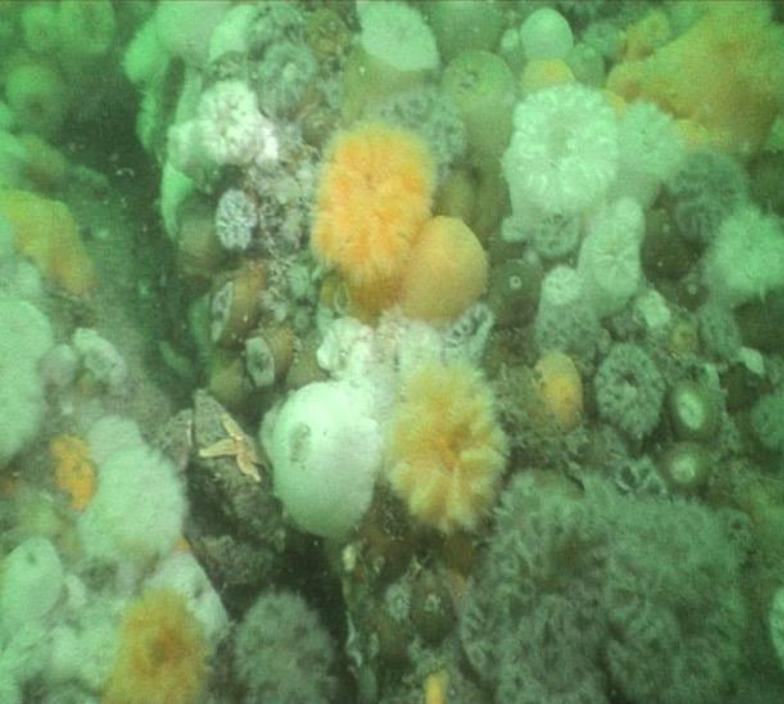


Biodiversity North Sea

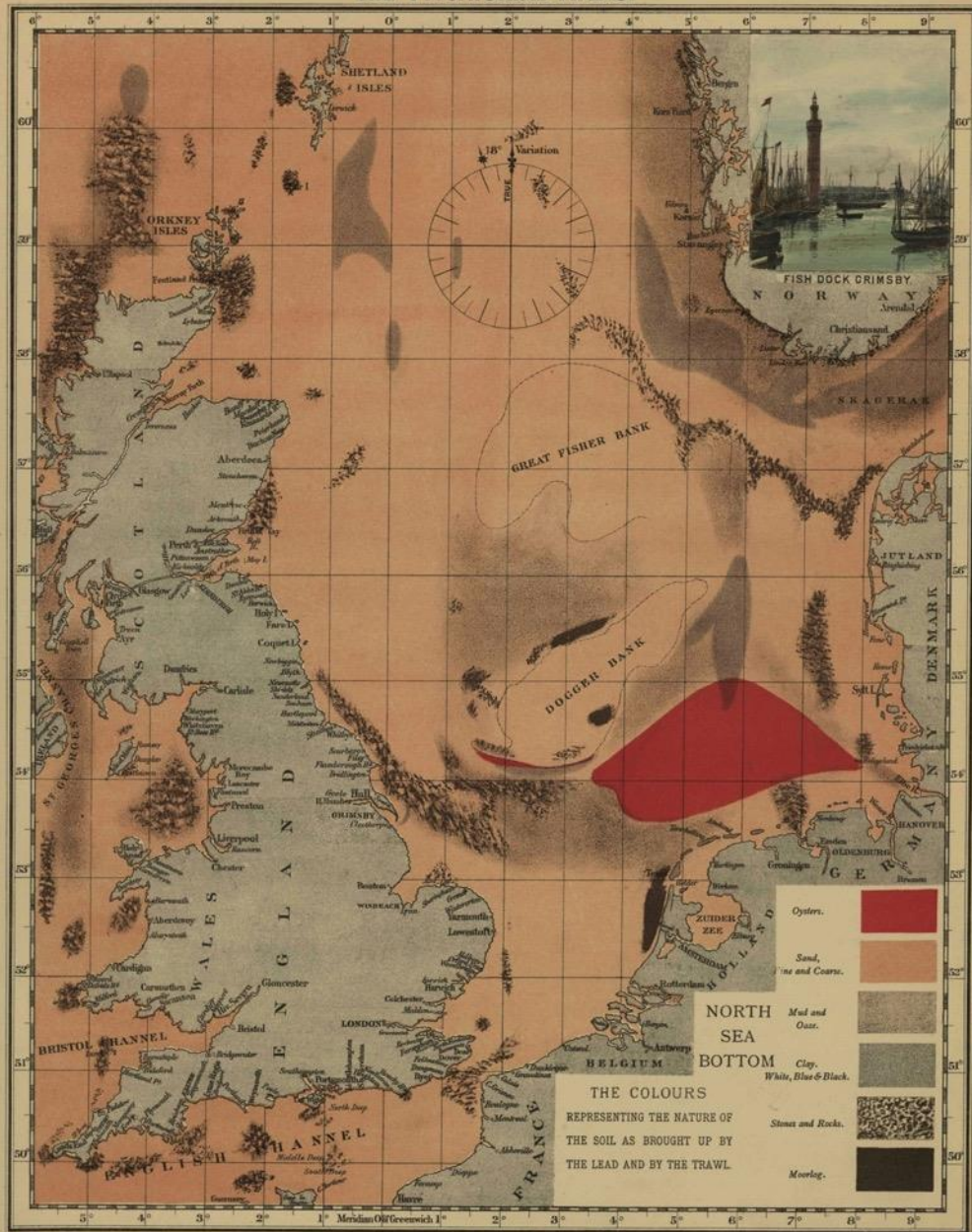
Benthos and fish:

- 50% soft bottom species
- 50% hard bottom species





THE PISCATORIAL ATLAS.



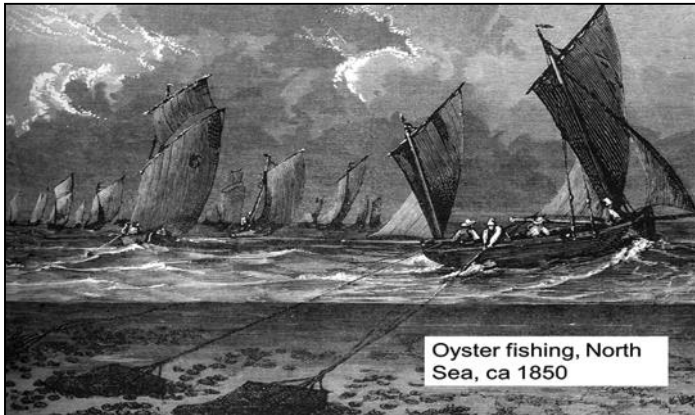


Oyster fishing, North
Sea, ca 1850



Lost ecosystem and..

- Lost oysters
- Lost hard substrate biodiversity
- Lost ecosystem services
- Lost knowledge of how the North Sea was





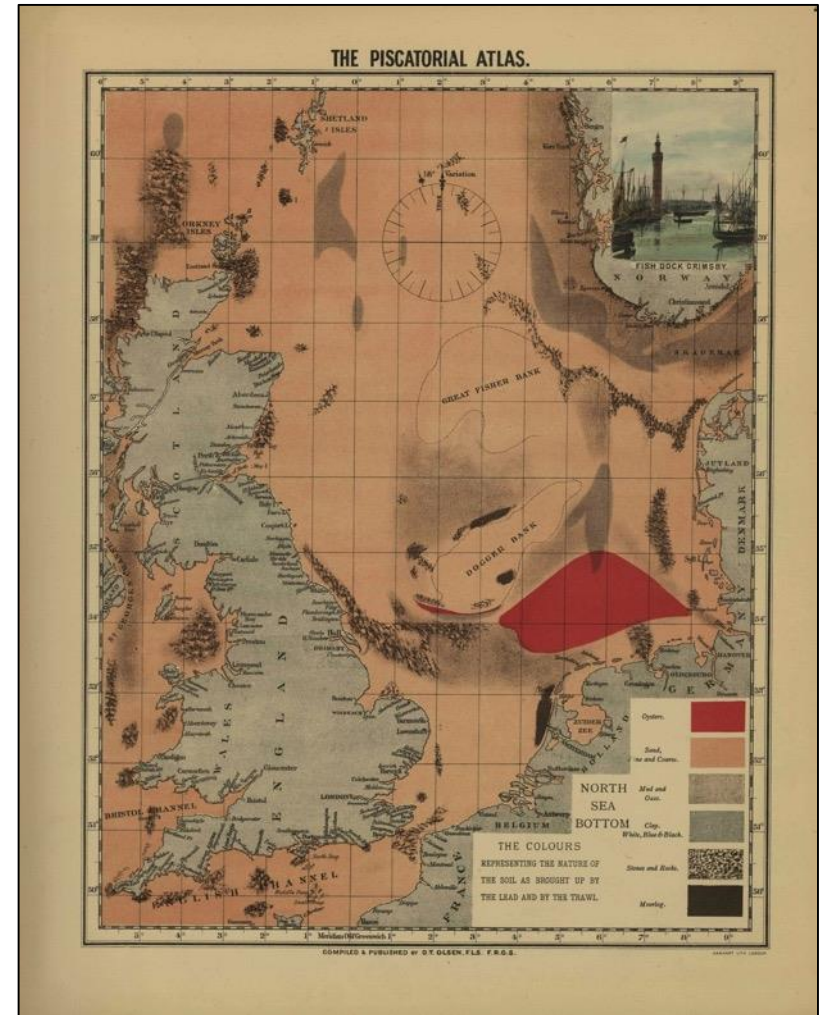
Restoration: The time is right

- First increase of native flat oyster population
- No real legal obstacles (Smaal et al., 2015)
- Locations of no disturbance
 - N2000
 - Offshore Wind farms
 - Marine strategy framework



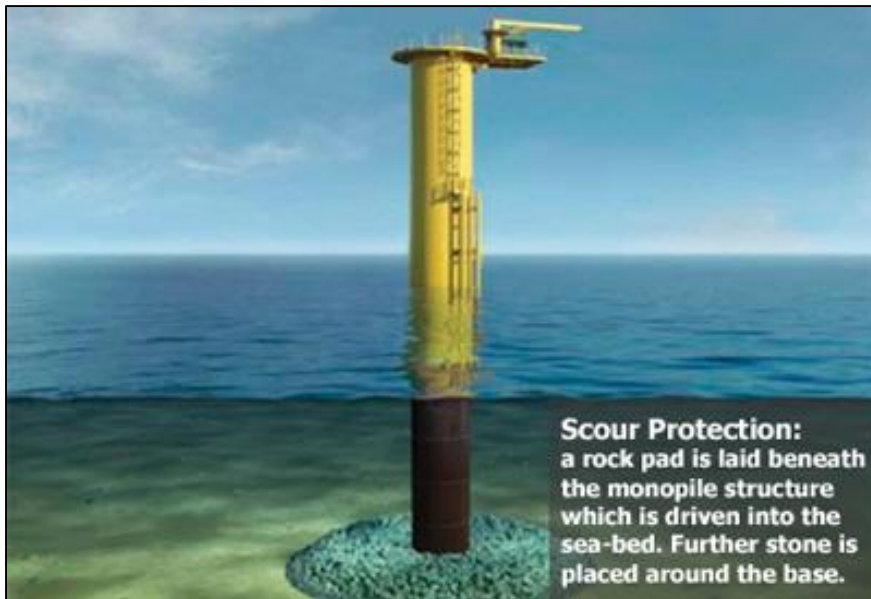
Approach

- Dream



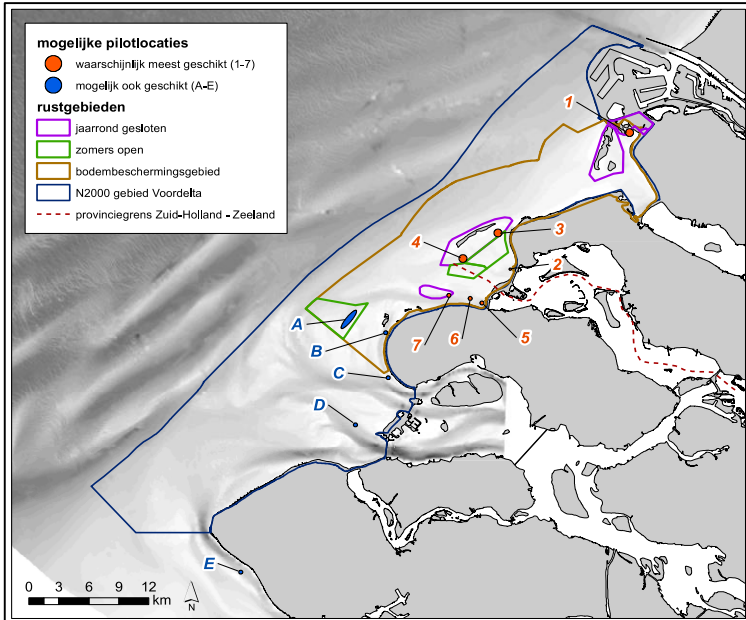
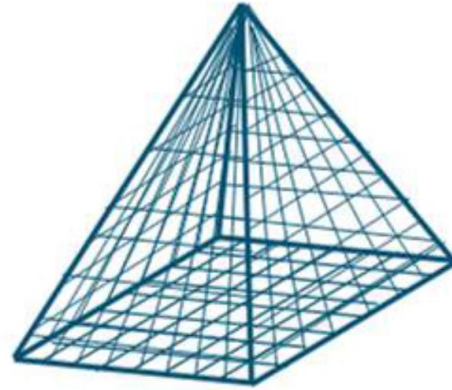
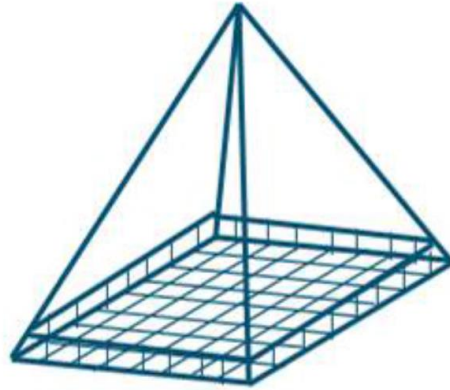
Approach

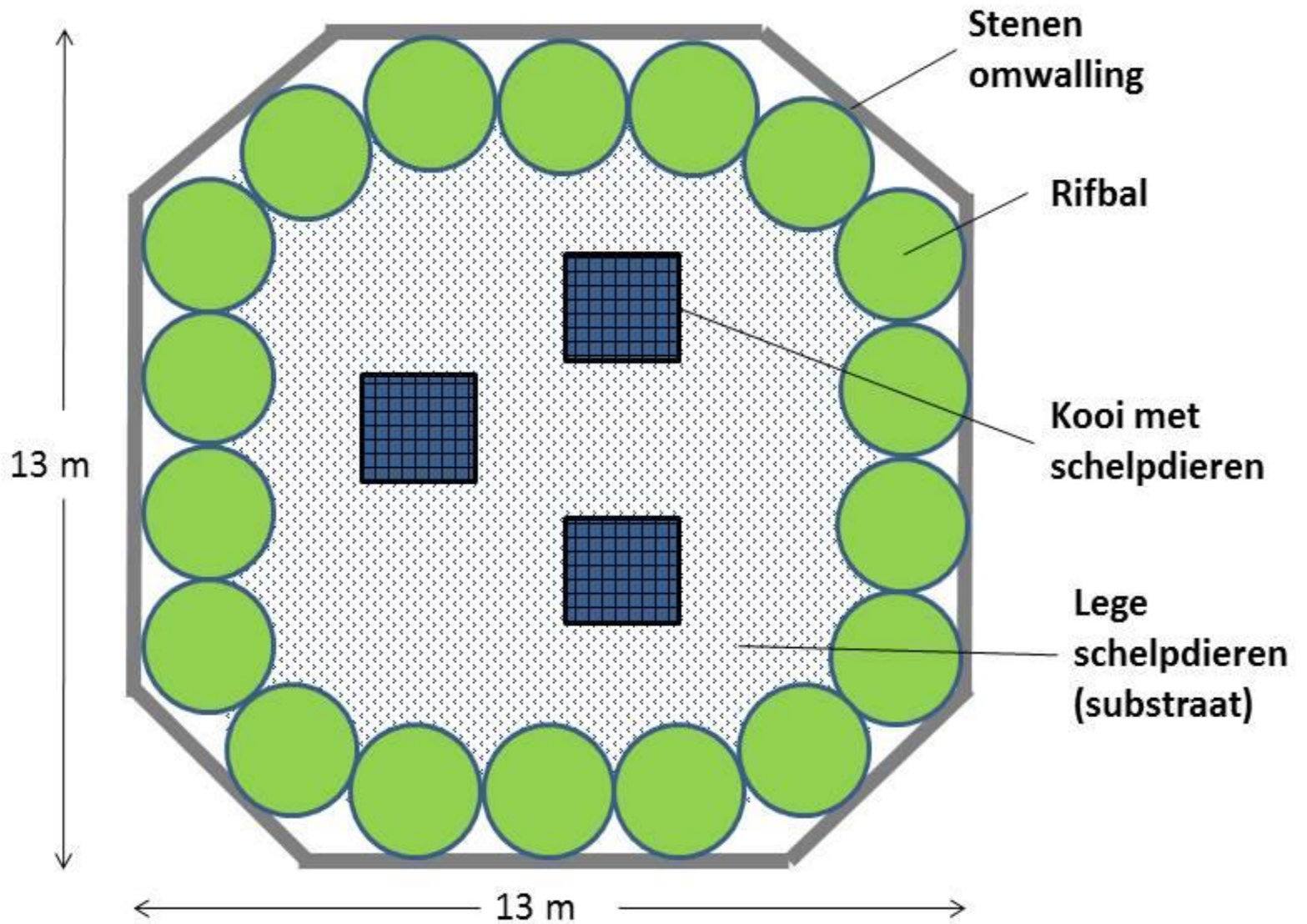
- Middle phase:
-experiments offshore



Approach

- Start: Experiments near shore in Voordelta
 - Need to learn
 - High monitoring intensity
 - Close to shore = great advantage
 - Close to existing natural population





Partners

- NGO's (ARK & WWF)
- EZ
- I&M

Future partnerships:

- Fishing sector
- Energy sector

WWF / ARK